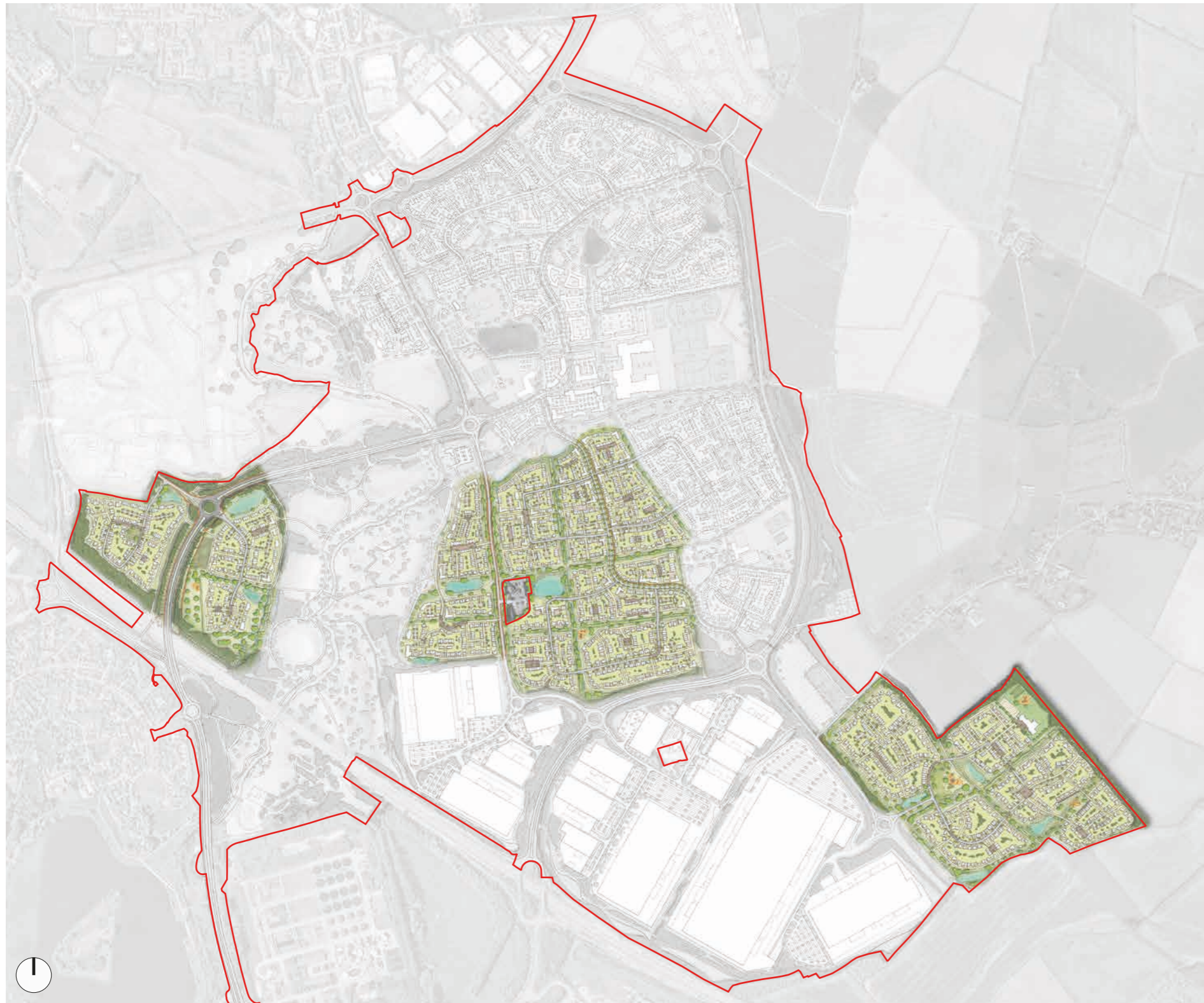


# INDICATIVE PHASING & IMPLEMENTATION



Illustrative Masterplan - Indicative Phase Three

## PHASE THREE: 2038 - 2048

Phase Three will likely be delivered between 2038 and 2048 and will incorporate the southern, western and south eastern areas of the site. This phase has a number of different characters with lower density areas just south of Moulsoe, and higher density areas towards the centre of the scheme.

The third and final primary school will be delivered in this phase to the south east of the site. This will ensure all residential homes are within an appropriate walking and cycling distance to education facilities.

- Phase Three development
- Phase Three primary school



Key plan - Phase Three (indicative only)